

# NORTON MUSEUM OF ART

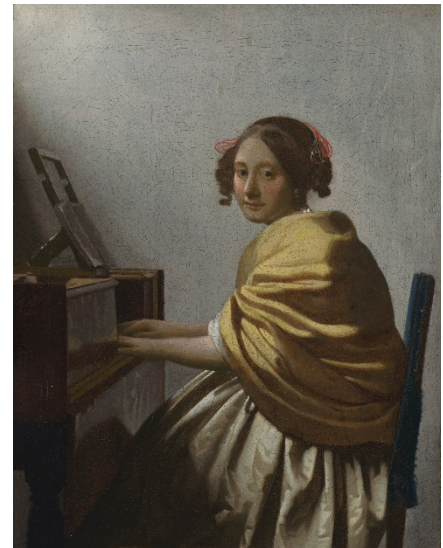
1450 S. Dixie Highway  
West Palm Beach, Florida 33401

norton.org

## Norton Museum of Art Announces Final Weeks of *Art and Life in Rembrandt's Time: Masterpieces from The Leiden Collection*

The first major presentation of The Leiden Collection in the United States, enters its final weeks at the Norton Museum of Art

The exhibition features 17th-century Dutch paintings by Rembrandt van Rijn, Frans Hals, and Jan Steen, as well as the only works in private hands by Johannes Vermeer and Carel Fabritius



LEFT: Rembrandt van Rijn (Dutch, 1606 – 1669), *Self-Portrait with Shaded Eyes*, 1634  
Oil on panel, 28 x 22 1/16 in., The Leiden Collection, New York

RIGHT: Johannes Vermeer (Dutch, 1632 – 1675), *Young Woman Seated at a Virginal*, circa 1670 – 1675  
Oil on canvas, 10 1/16 x 7 15/16 in., The Leiden Collection, New York

**WEST PALM BEACH, FL (February 24, 2026)** — The Norton Museum of Art announces the final weeks of *Art and Life in Rembrandt's Time: Masterpieces from The Leiden Collection*, a presentation of more than 75 works by 27 artists from The Leiden Collection — one of the world's most important private collections of 17th-century Dutch art. On view through March 29, 2026, this landmark show will soon conclude its time in South Florida. The exhibition has hosted a record number of visitors, with attendance up some 40% over the prior year, and may become the most-visited at the Norton in the last five years.

“We have been honored to host a record number of visitors from Florida and beyond for *Art and Life in Rembrandt's Time*,” said Ghislain d’Humières, Kenneth C. Griffin Director and CEO of the Norton Museum of Art. “This exhibition reflects the Norton’s commitment to making art of the highest caliber accessible to a broad public. With the show entering its final weeks, we hope visitors will take the opportunity to see these extraordinary works, many on view in Florida for the first time, in person.”

# NORTON MUSEUM OF ART

1450 S. Dixie Highway  
West Palm Beach, Florida 33401

norton.org

Coinciding with the 400th anniversary of the Dutch founding of New Amsterdam on the island of present-day Manhattan, the exhibition at the Norton draws from The Leiden Collection's unique strength, namely the depiction of humanity in all its facets — from portraits and character studies to genre scenes and historical subjects. It invites visitors to explore the breadth of the painters' skill, as well as learn more about the day-to-day activities of seventeenth-century Dutch citizens.

This not-to-be missed occasion offers a rare opportunity to contemplate the exceptional talent of Rembrandt van Rijn. Displayed in the galleries are 17 of Rembrandt's paintings spanning the entire arc of his career. Together, they reveal the renowned artist's singular ability to capture human expression and emotion, as well as fascinating evolutions in both his style and technique. Also on view are paintings by Rembrandt's teacher, peers, and students, as well as other artists working across the Netherlands in the 1600s.

The show brings to Florida The Leiden Collection's mission of building bridges through art. *Art and Life in Rembrandt's Time* joins the ranks of blockbuster presentations of The Leiden Collection, held at some of the most prestigious national museums in the world including the Louvre, the Pushkin and Hermitage museums, the National Museum of China, and Louvre Abu Dhabi.

"It has been a wonderful and truly full-circle moment to share the art of Rembrandt and Vermeer with Florida, where I spent such a formative part of my youth," said Dr. Thomas S. Kaplan, co-founder of The Leiden Collection. "The phenomenal reception at the Norton has rivaled that of other major art cities on our global tour, evidencing that Rembrandt's resonance and powerful legacy extends far and wide."

Through the prism of these 17th-century Dutch artists, the exhibition sheds light on a pivotal era of innovation in the history of art. Indeed, the creative breakthroughs and transformative impact of Rembrandt and his peers can still be felt today, having altered the trajectory of art from Impressionism and Expressionism, all the way through to modern and contemporary movements.

Exhibition highlights include Rembrandt's magisterial *Minerva in Her Study* (1635), the most important of Rembrandt's history paintings in a private collection; the master's exquisite oval *Young Girl in a Gold-Trimmed Cloak* (1632); and his *Self-Portrait with Shaded Eyes* (1634), which presents a young Rembrandt gazing directly at the viewer. The show also features two singularly fabulous works: Vermeer's *Young Woman Seated at a Virginal* (circa 1670–1675), the sole example of the artist's work in private hands, which was featured in the Rijksmuseum's transcendent 2023 exhibition on the artist, and *Hagar and the Angel* (circa 1645), the only privately held painting by Carel Fabritius, often called Rembrandt's greatest pupil. The exhibition also showcases works by other Amsterdam artists intimately connected to Rembrandt, including his influential teacher, Pieter Lastman, his Leiden colleague Jan Lievens, and talented students such as Gerrit Dou, Ferdinand Bol, and Arent de Gelder.

Organized thematically, the exhibition comprises formal and fantastical portraits, scenes of markets, music-making, biblical stories, labor, play, and other dynamic

# NORTON MUSEUM OF ART

1450 S. Dixie Highway  
West Palm Beach, Florida 33401

norton.org

subjects executed by a wide range of Dutch masters, including Gabriel Metsu, Jan Steen, Frans van Mieris, Hendrick ter Brugghen, Frans Hals, and Gerard ter Borch. Prominent works include Jan Lievens' *Boy in a Cape and Turban* (circa 1631), depicting a youth wearing a luminous, fanciful costume, and his ravishing *Self-Portrait* (circa 1629–1630); Gabriel Metsu's monumental *Woman Selling Game from a Stall* (circa 1653–1654); Frans van Mieris' evocative *Traveler at Rest* (circa 1657), capturing a confident young man relaxing on the roadside; and magnificent works by Jan Steen including his joyful *Self-Portrait with a Lute* (circa 1664) and solemn *Prayer Before the Meal* (1660) of a pious family breaking bread. Also represented in the show are painters who worked in other Dutch artistic centers, among them Hendrick ter Brugghen in Utrecht, Frans Hals in Haarlem, and Gerard ter Borch in Zwolle.

Jointly organized by The Leiden Collection and the Norton Museum of Art, the exhibition is accompanied by a fully illustrated, 150-page catalogue with detailed entries on each painting and an exploration of Dutch life in the 17<sup>th</sup> century.

*Art and Life in Rembrandt's Time* was curated by Elizabeth Nogrady, Curator, The Leiden Collection; Robert Evren, Consulting Curator for European Art; J. Rachel Gustafson, Chief Curatorial Officer, Norton Museum of Art; and Arthur K. Wheelock Jr., Senior Advisor to The Leiden Collection.

Visionary support for this exhibition was provided by Alina de Almeida and John Paulson.

Presenting support was provided by the George and Valerie Delacorte Endowment Fund, Judy and Leonard Lauder, Lynne Wheat and Thomas Peterffy, and Kenneth C. Griffin and Griffin Catalyst.

Leading support was provided by the Irina & Marcel van Poecke Foundation, Tad Smith and Caroline Fitzgibbons, and Anonymous.

Major support was provided by the Mr. and Mrs. Hamish Maxwell Exhibition Endowment, Point Gammon Foundation, Brian and Julie Simmons, Daisy Soros and Family, and the Soter Ziegler Foundation.

Additional support was provided by Cary Brown and Steven Epstein, Annabelle and Denis P. Coleman, the Lillian and Luis Fernandez Family Foundation, The Honorable David and Jennifer Fischer, the Anna-Maria and Stephen Kellen Foundation, Alice Z. Pannill, Richard Salomon and Laura Landro, Jordan A. Saunders, Paul and Betsy Shiverick, Sotheby's, Margaretta Taylor, and Luminary Circle supporters.

Sponsored in part by the Board of County Commissioners, the Tourist Development Council, and the Cultural Council for Palm Beach County; the State of Florida, Department of State, Division of Arts and Culture.



# NORTON MUSEUM OF ART

1450 S. Dixie Highway  
West Palm Beach, Florida 33401

norton.org

## **ABOUT THE NORTON MUSEUM OF ART**

The Norton Museum of Art, Florida's largest art museum, is home to a distinguished collection of art, with holdings in American, European, Contemporary and Asian Art, and Photography.

Founded in 1941 by Ralph Hubbard Norton and his wife, Elizabeth Calhoun Norton, the Museum collects, preserves, and exhibits art, and engages visitors through exhibitions, events and live entertainment featuring local musicians and performance artists. Public programming is year-round and designed to inspire conversations and build community through the power of art. The Museum is accessible to all.

The Museum's expansion and renovation was led by London-based architecture firm Foster + Partners, adding a building and more than 12,000 square feet of new gallery space, an educational center, a store and restaurant, a sculpture garden, and a Great Hall, serving as the Museum's "living room." The campus is home to renovated, Museum-owned, 1920s-era cottages that house artists-in-residence.

Visit the Museum's website at [Norton.org](http://Norton.org) or connect on [Instagram](#) and [Facebook](#).

## **ABOUT THE LEIDEN COLLECTION**

The Leiden Collection, founded in 2003 by Franco-American collector Dr. Thomas S. Kaplan and his wife, Daphne Recanati Kaplan, comprises some 220 paintings and drawings and represents one of the largest and most important assemblages of 17th-century Dutch paintings in private hands. The Collection is named after Rembrandt's native city in honor of the artist's transcendence and focuses on the works of Rembrandt and his followers, illuminating the personalities and themes that shaped the time period over five generations. The Collection is the most comprehensive representation of the Leiden artists known as *fijnschilders* ("fine manner painters"), who concentrated on painting portraits, genre scenes, and history paintings. To learn more, please visit [theleidencollection.com](http://theleidencollection.com) — home to an extensive online catalogue and scholarly resource that features detailed entries on each painting, biographies of artists, and essays by leading scholars.

## **MEDIA CONTACT**

*For the Norton:*

FITZ & CO

Kat Harding | [+1 646 589 0923](tel:+16465890923) | [kharding@fitzandco.com](mailto:kharding@fitzandco.com)

*For The Leiden Collection:*

Polskin Arts

Alison Buchbinder | [+1 646 688 7826](tel:+16466887826) | [alison.buchbinder@finnpartners.com](mailto:alison.buchbinder@finnpartners.com)

Ariana Heffner | [+1 202 413 7123](tel:+12024137123) | [ariana.heffner@finnpartners.com](mailto:ariana.heffner@finnpartners.com)